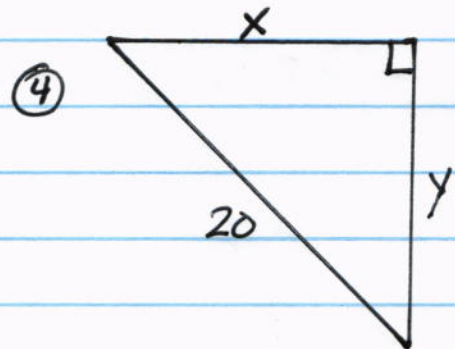
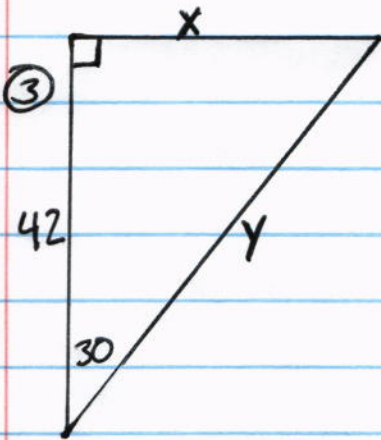
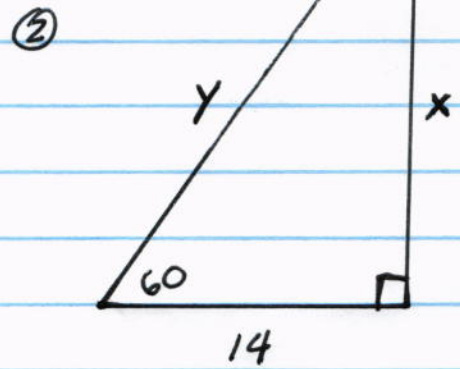
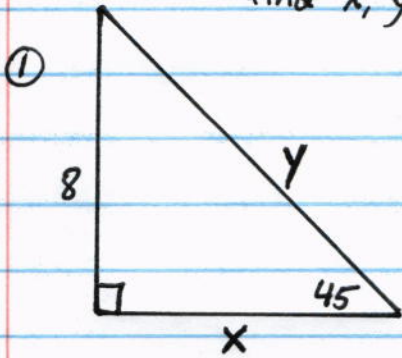
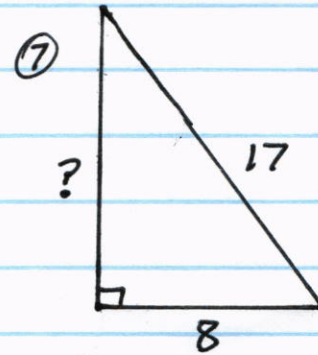
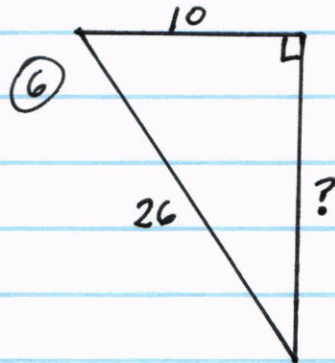
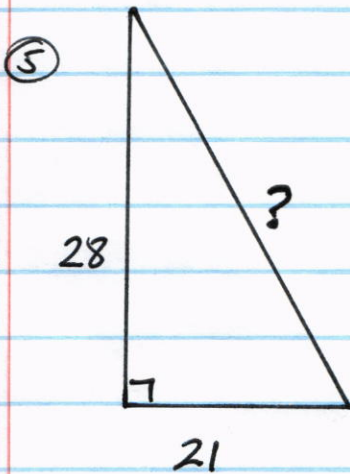


Part 1 45-45-90 & 30-60-90  
find  $x, y$



## Part 2 Pythagorean theorem

Find the missing side in the given right triangle



⑧

hypotenuse  
↓  
24, 45, ??

⑨

hypotenuse  
↓  
15, 36, ??

⑩

hypotenuse  
↓  
30, ??, 50

Part 3 solve the triangle (find all angles & sides)

