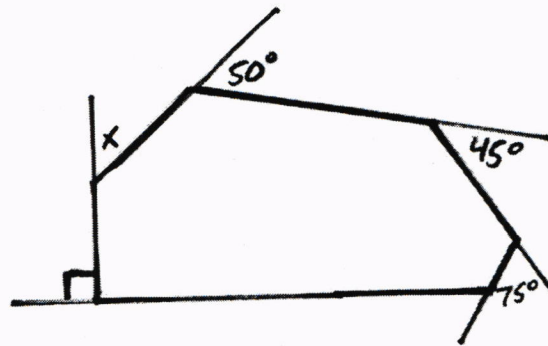


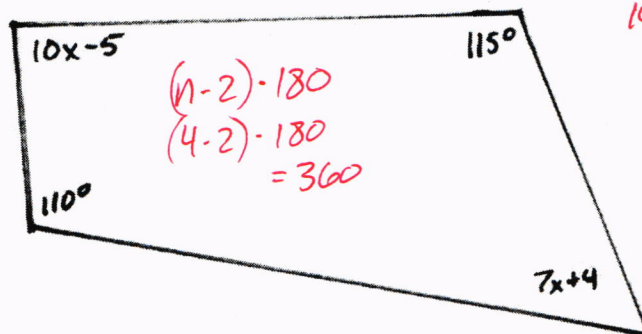
①



Exterior angles
add to 360°
Subtract 5 known angles

$$x = 100$$

②



$$10x - 5 + 115 + 7x + 4 + 110 = 360$$

$$10x - 5 + 7x + 4 = 135$$

$$17x - 1 = 135$$

$$17x = 136$$

$$x = 8$$

③ In a regular 24-gon, what is the sum of the INTERIOR angles? $(24-2) \cdot 180 = 3,960^\circ$

④ In a regular 24-gon, what is the measure of each INTERIOR angle? $3,960 \div 24 = 165^\circ$

⑤ In a regular 24-gon, what is the sum of the EXTERIOR angles? 360

⑥ In a regular 24-gon, what is the measure of each EXTERIOR angle? $360 \div 24 = 15^\circ$